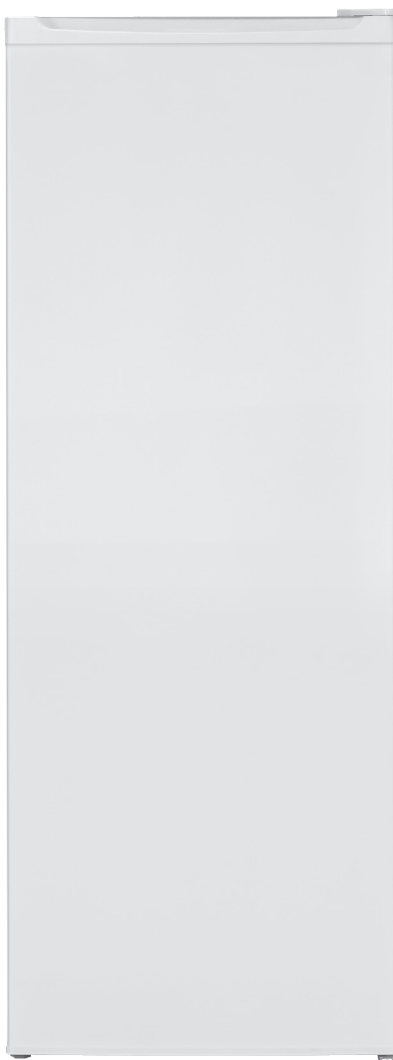


# LOGIK

## Tall Fridge

Installation / Instruction Manual

LTL55W22





# Contents

---

- Safety Warnings.....4**
- Unpacking .....6**
- Installation .....7**
  - Location .....7
  - Free Space Requirements.....7
  - Reversing the Door Swing.....8
  - Cleaning Before Use ..... 11
  - Before Using Your Unit..... 11
- Product Overview.....12**
- Operation .....13**
  - Switching On Your Unit ..... 13
  - Adjusting the Temperature..... 13
  - Noises Inside the Unit!..... 13
  - Tips for storing food in the fridge and reducing food waste..... 14
- Cleaning .....16**
  - Cleaning the Interior and the Exterior of the Unit..... 16
  - Cleaning Evaporation Tray ..... 16
- Maintenance .....17**
  - Changing the Internal Light ..... 17
  - Care When Handling / Moving Your Unit..... 17
  - Servicing ..... 17
  - Switching Off for Long Periods of Time..... 17
  - Condensation..... 17
- Disposal .....17**
- Troubleshooting .....18**
- Specifications.....19**

## Safety Warnings

---

For your continued safety and to reduce the risk of injury or electric shock, please follow all the safety precautions listed below.

- Read all instructions carefully before using the unit and keep them for future reference.
- Retain the manual. If you pass the unit onto a third party, make sure to include this manual.
- This appliance is intended for indoor household use and similar applications such as:
  - staff kitchen areas in shops, offices and other working environments;
  - farm houses and by clients in hotels, motels and other residential type environment;
  - bed and breakfast type environment;
  - catering and similar non-retail applications.
- Your unit is not tested to be used in a commercial environment, use in such places may invalidate your warranty.
- Ensure that the plug is easily accessible to enable disconnection from the mains supply.
- If the mains cable is damaged, it must be replaced by the manufacturer, its service agent or a qualified technician in order to avoid a hazard.
- Choose a location for your unit away from heat sources such as radiators or fires as refrigerant and vesicant are burnable.
- The unit must be manoeuvred by a minimum of 2 persons.
- This appliance can be used by children aged from 8 years and above and persons with reduced physical, sensory or mental capabilities or lack of experience and knowledge if they have been given supervision or instruction concerning use of the appliance in a safe way and understand the hazards involved. Children shall not play with the appliance. Cleaning and user maintenance shall not be made by children without supervision.
- Children aged from 3 to 8 years are allowed to load and unload refrigerating appliances.
- Children should be supervised to ensure that they do not play with the unit.
- If your unit is fitted with a lock to prevent children being trapped inside, keep the key out of reach and not in the vicinity of the unit.
- Do not store explosive substances such as aerosol cans with a flammable propellant in this appliance.

- Do not store bottles or glass containers in the freezer compartment. Contents can expand when frozen (fizzy drinks) which may break the bottle and damage your freezer compartment.
- This appliance is not intended for use at altitudes exceeding 2000m.
- Do not use a mains plug adapter or extension cable. It may overheat and cause a fire.
- Although every care has been taken to ensure this appliance has no burrs or sharp edges, we recommend that you wear protective gloves when unpacking, installing and moving this appliance. This will prevent any injury.



### **WARNING**

- Keep ventilation openings in the unit enclosure or in the built-in structure clear of obstructions.
- Do not use mechanical devices or other means to accelerate the defrosting process, other than those recommended by the manufacturer.
- Do not use electrical appliances inside the food storage compartments of the unit, unless they are of the type recommended by the manufacturer.
- Do not damage the refrigerant circuit (the refrigerant is a very environmental-friendly gas but is also combustible. Take care when transporting or moving the unit to ensure that the refrigeration circuit is not damaged. In the event of damage avoid naked flames or ignition sources and ventilate the room in which the unit is placed for a few minutes).
- When positioning the appliance, ensure the supply cord is not trapped or damaged.
- Do not locate multiple portable socket-outlets or portable power supplies at the rear of the appliance.

### **WARNING**



IT IS HAZARDOUS FOR ANYONE OTHER THAN AUTHORISED SERVICE PERSONNEL TO CARRY OUT SERVICING OF REPAIRS WHICH INVOLVE THE REMOVAL OF COVERS.



TO AVOID THE RISK OF AN ELECTRICAL SHOCK DO NOT ATTEMPT REPAIRS YOURSELF.



RISK OF FIRE / FLAMMABLE MATERIALS

**Thank you** for purchasing your new product.

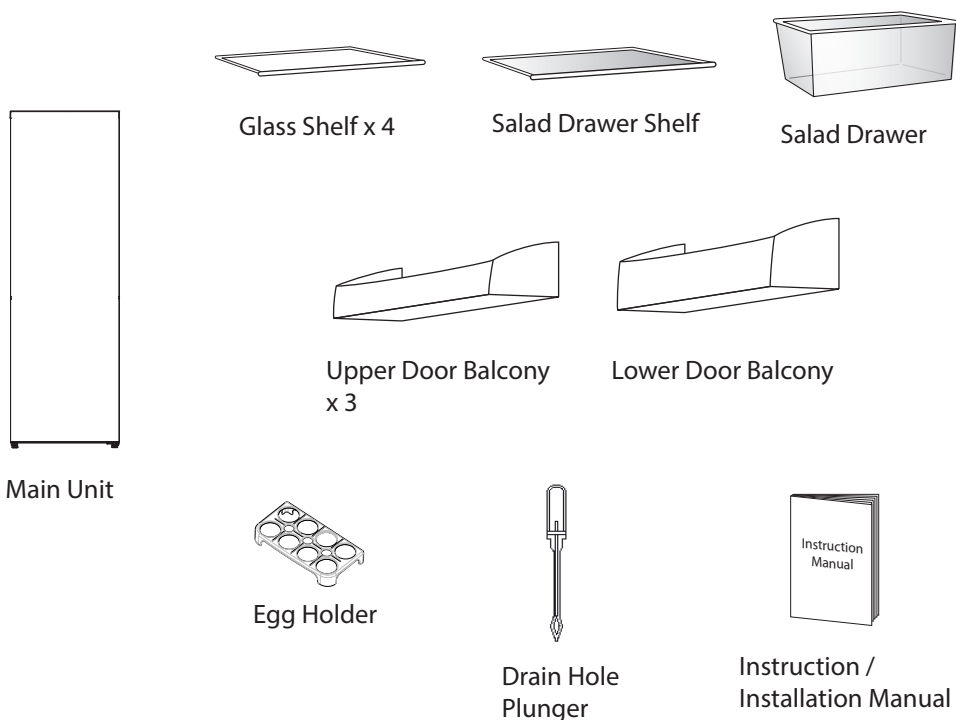
We recommend that you spend some time reading this instruction manual in order that you fully understand all the operational features it offers. You will also find some hints and tips to help you resolve any issues.

Read all the safety instructions carefully before use and keep this instruction manual for future reference.

## Unpacking

Remove all items from the packaging. Retain the packaging. If you dispose of it please do so according to local regulations.

The following items are included:



If items are missing, or damaged please contact Partmaster (UK only).  
Tel: 0344 800 3456 for assistance. Parts are available from 10 years after purchase.

\* All images are for indication only; please refer to your individual unit for actual item.

## INSTALLATION

### Location

When selecting a position for your unit you should make sure the floor is flat and firm, and the room is well ventilated with an average room temperature of between 16°C and 32°C. Avoid locating your unit near a heat source, e.g. cooker, boiler or radiator. Also avoid direct sunlight as it may increase the electrical consumption. Extreme cold ambient temperatures may also cause the unit not to perform properly. This unit is not designed for use in a garage or outdoor installation. Do not drape the unit with any covering. This refrigerating appliance is not intended to be used as a built-in appliance.



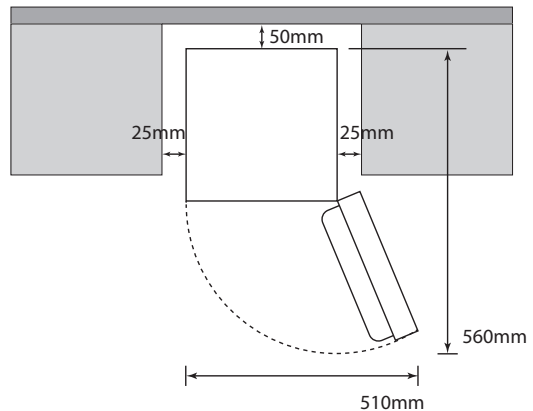
- Your appliance must be at least 50 cm away from stoves, gas ovens and heater cores, and at least 5 cm away from electrical ovens.
- Make sure the mains socket or an isolation switch is accessible to be able to disconnect the appliance at any time.

### Free Space Requirements

When installing the unit, ensure that at least 25 mm of free space is left at both sides, at least 50 mm at the rear of the unit and at least 150 mm at the top of the unit.

The door can be opened to the right or the left, depending on which best suits the location.

Please ensure there is more than twice the width (at least 510mm) and depth (at least 560mm) distance space of the unit to fully open the door to a maximum angle.



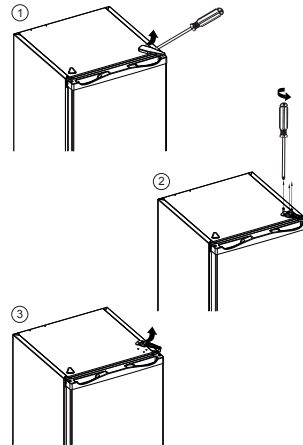
### Reversing the Door Swing

**Tools required:** Philips style screwdriver / Flat bladed screwdriver / Spanner

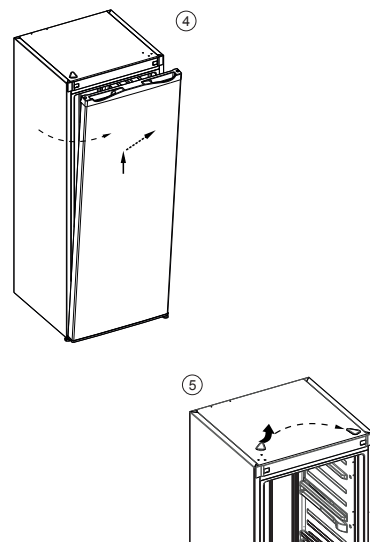


- Ensure the unit is unplugged and empty.
- To take the door off it is necessary to tilt the unit backwards. You should rest the unit on something solid, e.g. a chair just below the top panel.
- All parts removed must be saved to do the reinstallation of the door.
- Do not lay the unit flat as this may damage the coolant system.
- We recommend that 2 people handle the unit during assembly.
- If you want to have the door swing reversed, we recommend that you contact a qualified technician. You should only try to reverse the door yourself if you believe that you are qualified to do so.

1. Remove the hinge cover ①, you can use a flat-bladed screwdriver to do so. Unscrew and remove the top hinge ②③.



2. Lift and remove the door carefully ④ and place it on a padded surface to avoid scratch. Remove the left hole cover and insert it to the right side to cover the holes ⑤.

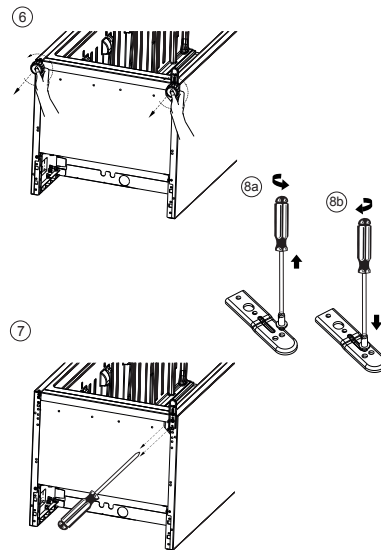


\* All images are for indication only; please refer to your individual unit for actual item.

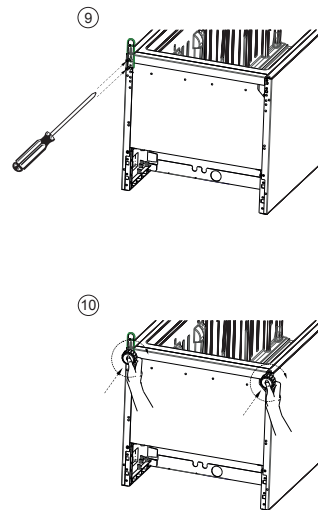


## INSTALLATION

3. Remove the levelling feet ⑥ from the unit bottom. Unscrew and remove the bottom hinge ⑦. On the bottom hinge, unscrew and remove the hinge pin ⑧a and screw it to the other hole beside ⑧b.



4. Screw the bottom hinge to the other side ⑨. Replace the levelling feet ⑩.

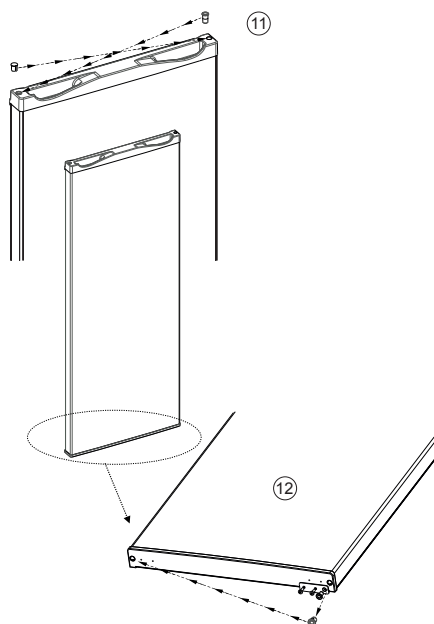


- Do not lay the unit flat as this may damage the coolant system.
- During door reversal, when swapping the position of the bottom hinge or adjusting the levelling feet, tilt the unit. Do not lay the unit flat.

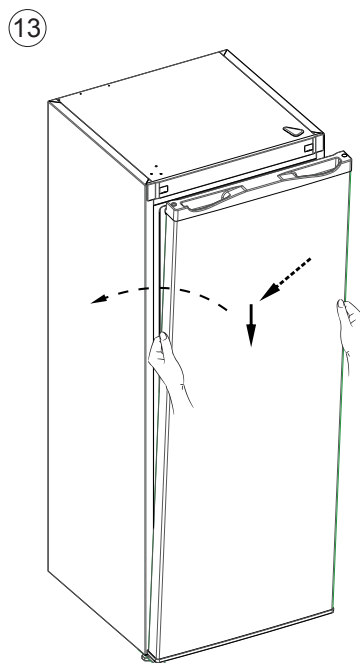
\* All images are for indication only; please refer to your individual unit for actual item.

## INSTALLATION

5. On the top part of the door, remove the door hinge shaft from the right side and door cover from the left side, then swap their position ⑪. On the bottom part of the door, remove the door hinge shaft from the right side and move it to the left side ⑫.



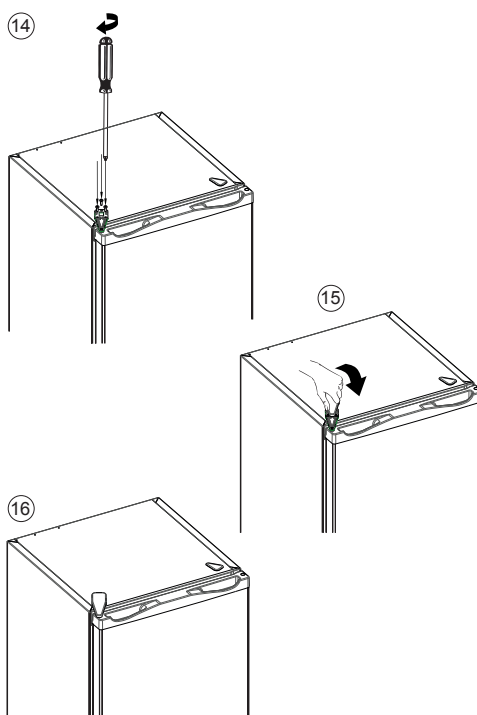
6. Place the door back carefully, inserting the bottom part of the door into the bottom hinge pin. Align it horizontally and vertically on all sides.



\* All images are for indication only; please refer to your individual unit for actual item.

## INSTALLATION

7. With the door aligned on all sides, screw the top hinge ⑭. Replace the hinge cover ⑮.
8. Re-adjust the levelling feet as needed.



\* All images are for indication only; please refer to your individual unit for actual item.

### Cleaning Before Use

Wipe the inside of the unit with a weak solution of bicarbonate soda. Then rinse with warm water using a sponge or cloth. Wipe completely dry before replacing the shelves and drawers. Clean the exterior of the unit with a damp cloth.

If you require more information refer to the **Cleaning** section.



#### • Before Plugging in YOU MUST

Check that you have a socket which is compatible with the plug supplied with the unit. A specially grounded plug has been connected to the power cable of your refrigerator. This plug should be used with a specially grounded socket of 13 amperes. If there is no such socket in your house, please have it installed by an authorized electrician. If the socket does not match the refrigerator plug, it must be replaced by the manufacturer, its service agent or similar qualified persons in order to avoid a hazard.

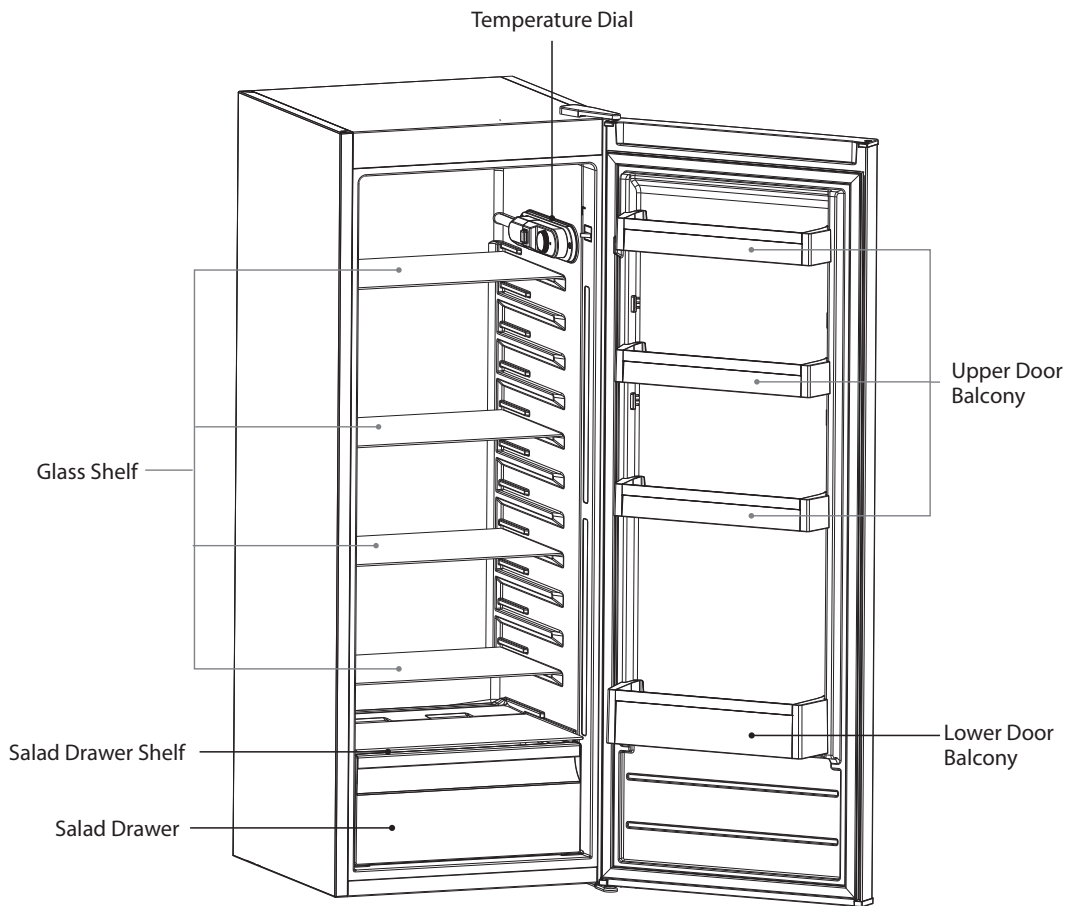
#### • Before Turning On!

Do not turn on until two hours after moving the unit. The coolant fluid needs time to settle.

### Before Using Your Unit

Before placing any food in your unit, turn it on and wait for 24 hours, to make sure it is working properly and to allow it time to fall to the correct temperature. Your unit should not be overfilled.

# Product Overview



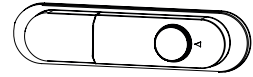
All accessories such as drawers, shelves and balconies should be kept like the diagram here for the most efficient use of energy.

\* All images are for indication only; please refer to your individual unit for actual item.

# Operation

## Switching On Your Unit

1. Connect the mains cable to the mains socket. The internal temperature of your unit is controlled by a thermostat. There are five settings, of which position **5** is the coldest. Unplug the unit to switch off.
2. Adjust the temperature dial to the desired position, bear in mind that the higher the number, the lower the temperature. Position **3** is the recommended setting when operating at normal room temperature (between 16°C and 32°C).
3. The unit may not operate at the correct temperature if it is in a particularly hot or a particularly cold room, or if you open the door often. Opening the door for long periods can cause a significant increase of the temperature in the compartments of the appliance.
4. To ensure that the unit is cool enough to sufficiently chill your food, wait 24 hours before filling it with food.
5. If you are concerned that your unit is not being kept cold enough and wish to check the temperature, you will need a special fridge/freezer thermometer. These are available from most supermarkets and hardware shops. Place the thermometer in either the fridge or freezer compartment and leave overnight. The correct temperature for the fridge compartment should be an average of 5°C while the freezer compartment should be -18°C or lower.



## Adjusting the Temperature

The internal temperature of the unit is controlled by a thermostat. Position **1-3** for short term storage, position **4-5** for long term storage. Please adjust according to the environment.



- A high temperature setting may accelerate food to turn bad, hence increase food waste. Therefore for optimum food preservation, a middle temperature setting is generally the most safe and suitable.
- High ambient temperatures (e.g. on hot summer days) and a coldest setting (position 5) may cause the compressor to run continuously or even non-stop. This is because when the ambient temperature is high, the compressor must run continuously to maintain the low temperature in the appliance.

## Noises Inside the Unit!

You may notice that your unit makes some unusual noises. Most of these are perfectly normal, but you should be aware of them!

These noises are caused by the circulation of the refrigerant liquid in the cooling system. It has become more pronounced since the introduction of CFC free gases. This is not a fault and will not affect the performance of your unit. This is the compressor motor working, as it pumps the refrigerant around the system.

\* All images are for indication only; please refer to your individual unit for actual item.

## Tips for storing food in the fridge and reducing food waste

- Cooked meats/fishes should always be stored on a shelf above raw meats/fishes to avoid bacterial transfer. Keep raw meats/fishes in a container which is large enough to collect juices and cover it properly. Place the container on the lowest shelf at the bottom of the fridge compartment.
- Leave space around your food, to allow air to circulate inside the compartments. Ensure all parts of the unit are kept cool.
- To prevent transfer of flavours and drying out, pack or cover the food separately. Fruit and vegetables do not need to be wrapped.
- Always let pre-cooked food cool down before you put in the unit. This will help to maintain the internal temperature of the unit.
- To prevent cold air escaping from the unit, try to limit the number of times you open the door. We recommend that you only open the door when you need to put food in or take food out.
- To reduce humidity and avoid the consequent formation of frost, always store liquids in sealed containers in the refrigerator. Frost tends to concentrate in the coldest parts of the evaporating liquid and, in time, your appliance will require more frequent defrosting.
- Never place warm food in the refrigerator. Warm food should be allowed to cool at room temperature and should be arranged to ensure adequate air circulation in the refrigerator compartment.
- Make sure no items are in direct contact with the rear wall of the appliance as frost will develop and packaging will stick to it. Do not open the refrigerator door frequently.
- We recommend that meat and clean fish are loosely wrapped and stored on the glass shelf just above the vegetable bin where the air is cooler, as this provides the best storage conditions.
- Store loose fruit and vegetable items in the crisper containers.
- Store loose fruit and vegetables in the crisper.
- Storing fruit and vegetables separately helps prevent ethylene-sensitive vegetables (green leaves, broccoli, carrot, etc.) being affected by ethylenereleaser fruits (banana, peach, apricot, fig etc.).
- Do not put wet vegetables into the refrigerator.
- Storage time for all food products depends on the initial quality of the food and an uninterrupted refrigeration cycle before refrigerator storage.
- To avoid cross-contamination do not store meat products with fruit and vegetables. Water leaking from meat may contaminate other products in the refrigerator. You should package meat products and clean any leakages on the shelves.
- Do not put food in front of the air flow passage.



Potatoes, onions and garlic should not be stored in the refrigerator.

- Consume packaged foods before the recommended expiry date.
- For normal working conditions, it will be sufficient to adjust the temperature setting of your refrigerator to +4 °C.
- The temperature of the fridge compartment should be in the range of 0-8 °C, fresh foods below 0 °C are iced and rotted, bacterial load increases above 8 °C, and spoils.
- Do not put hot food in the refrigerator immediately, wait for the temperature to pass outside. Hot foods increase the degree of your refrigerator and cause food poisoning and unnecessary spoiling of the food.
- Meat, fish, etc. should be stored in the chiller compartment, and the vegetable compartment is preferred for vegetables (if available).
- To prevent cross contamination, meat products and fruit vegetables are not stored together.
- Foods should be placed in the refrigerator in closed containers or covered to prevent moisture and odours.

The table below is a quick guide to show you the most efficient way to store the major food groups in your refrigerator compartment.

<b>Food</b>	<b>Maximum Storage Time</b>	<b>How and Where to Store</b>
Vegetables and fruits	1 week	Vegetable bin
Raw meat and fish	2 - 3 days	Wrap in plastic or foil, use sealable bags, or in a meat container and store on the glass shelf
Fresh cheese	3 - 4 days	On the designated door shelf
Butter and margarine	2 weeks (unpacked) 1 month (packed)	On the designated door shelf
Bottled products e.g. milk and yoghurt	Until the expiry date recommended by the producer	On the designated door shelf
Eggs	1 month	On the designated egg shelf
Cooked food	2 days	All shelves

# Cleaning

---

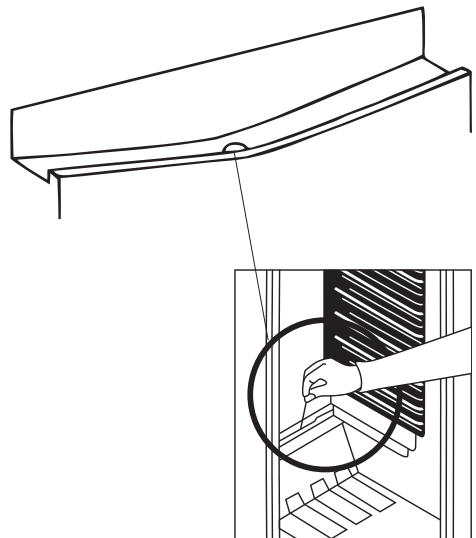
## Cleaning the Interior and the Exterior of the Unit

- Remove all the shelves and drawers before cleaning.
- Wipe the inside of the unit with a weak solution of bicarbonate soda and then rinse with warm water using a sponge or cloth. Wipe completely dry before replacing the shelves and drawers.
- Use a damp cloth to clean the exterior, and then wipe with a standard furniture polish. Make sure that the doors are closed to avoid the polish getting on the magnetic door seals or inside the unit.
- The grille of the condenser at the back of the unit and the adjacent components can be vacuumed using a soft brush attachment.
- Clean regularly surfaces that can come in contact with food and accessible drainage systems.

## Cleaning Evaporation Tray

Condensation will drip down the back of your fridge and into the evaporation tray, this water will be channelled out of your fridge and evaporate. You must keep the evaporation tray clear of food debris.

- Keep the drain hole plunger in the drain hole. This will help to prevent debris blocking the drain hole. The drain hole plunger will still allow water to drain away.
- Wipe the evaporation tray to remove any debris.
- Make sure the drain hole is clear of debris at all times.



\* All images are for indication only; please refer to your individual unit for actual item.



# Maintenance

---

## Changing the Internal Light

The internal light is an LED light. It cannot be changed by the user; please contact your service agent. Light source in this product is replaceable only by qualified engineers.

## Care When Handling / Moving Your Unit

Hold the unit around its sides or base when moving it. Under no circumstances should it be lifted by holding the edges of the top surface.

## Servicing

The unit should be serviced by an authorised engineer and only genuine spare parts should be used. Under no circumstances should you attempt to repair the unit yourself. Repairs carried out by inexperienced persons may cause injury or serious malfunction. Contact a qualified technician.

## Switching Off for Long Periods of Time

When the unit is not in use for a long period of time, disconnect it from the mains supply, empty all food, defrost and clean the appliance, leaving the door ajar to prevent unpleasant smells and mould developing within the appliance.

## Condensation

Condensation may appear on the outside of the unit. This may be due to a change in room temperature. Wipe off any moisture residue. If the problem continues, please contact a qualified technician for assistance.

# Disposal

---

Old units still have some residual value. An environmentally friendly method of disposal will ensure that valuable raw materials can be recovered and used again. The refrigerant used in your unit and insulation materials require special disposal procedures. Ensure that none of the pipes on the back of the unit are damaged prior to disposal.

Up to date information concerning options of disposing of your old unit and packaging from the new one can be obtained from your local council office.

When disposing of an old unit break off any old locks or latches and remove the door as a safeguard.

# Troubleshooting

---

If your unit isn't working properly there may be a minor problem, check the following.

<b>The unit does not operate.</b>	<ul style="list-style-type: none"><li>• Is there power to the unit?</li><li>• Is the unit plugged in and switched on at the socket?</li><li>• Is the socket faulty? Check the socket with another appliance.</li><li>• Check the thermostat.</li></ul>
<b>The performance is poor.</b>	<ul style="list-style-type: none"><li>• The unit could be overloaded.</li><li>• Check if the door is closing properly.</li><li>• Clean the condenser (the black fins on the back).</li><li>• Make sure you have an air gap around the unit.</li></ul>
<b>The unit is noisy.</b>	<ul style="list-style-type: none"><li>• Some noise is normal, it is the cooling gas circulating.</li><li>• Make sure the unit is level.</li><li>• Check if objects are vibrating inside.</li></ul>
<b>Pools of water at the bottom of the unit.</b>	<ul style="list-style-type: none"><li>• Clean the evaporation tray, make sure the drain hole is not blocked.</li></ul>
<b>Food is freezing in the Fridge.</b>	<ul style="list-style-type: none"><li>• Don't allow food to touch the back of the unit, if it touches the back, it may freeze.</li><li>• The thermostat is set to high, try turning it down.</li></ul>

# Specifications

Rated Voltage	220-240V~, 50 Hz
Rated Current	0,55 A
Climate Class	N This refrigerating appliance is intended to be used at an ambient temperature ranging from 16°C to 32°C.
Overall Dimension (H x W x D)	1455 x 540 x 595 mm

Features and specifications are subject to change without prior notice.

This product contains a light source of energy efficiency class 'E'.



To view energy information about your product scan the QR code on your Energy Label.

**All the support you need.**

**currys.co.uk**

**UK: 0344 561 1234**

**Ireland: 1890 818 575**

**Partmaster**  
\_\_\_\_\_.co.uk

Visit [Partmaster.co.uk](http://Partmaster.co.uk) today for the easiest way to buy electrical spares and accessories. With over 1 million spares and accessories available we can deliver direct to your door the very next day. Visit [www.partmaster.co.uk](http://www.partmaster.co.uk) or call 0344 800 3456 (UK customers only). Calls charged at National Rate.



The symbol on the product or its packaging indicates that this product must not be disposed of with your other household waste. Instead, it is your responsibility to dispose of your waste equipment by handing it over to a designated collection point for the recycling of waste electrical and electronic equipment. The separate collection and recycling of your waste equipment at the time of disposal will help conserve natural resources and ensure that it is recycled in a manner that protects human health and the environment.

For more information about where you can drop off your waste for recycling, please contact your local authority, or where you purchased your product.

Currys Group Limited (co. no. 504877)  
1 Portal Way, London, W3 6RS, UK

**EU Representative**

Currys Ireland Limited (259460)  
3rd Floor Office Suite,  
Omni Park SC, Santry, Dublin 9, Republic of Ireland

IB-LTL55W22-220804V1